

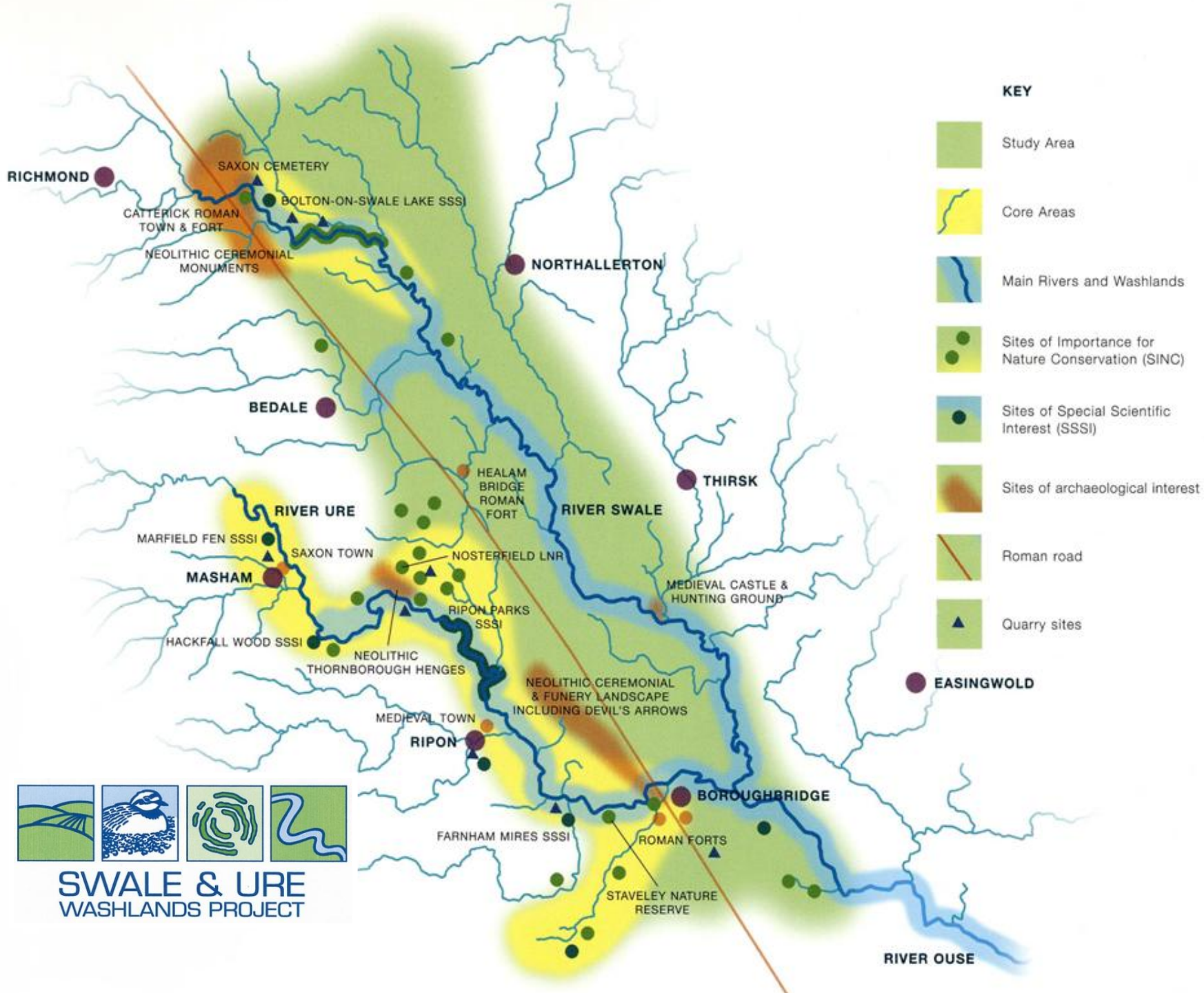


The LOWER URE
CONSERVATION
TRUST

YNU Presidential Address Nosterfield – its Inspiration

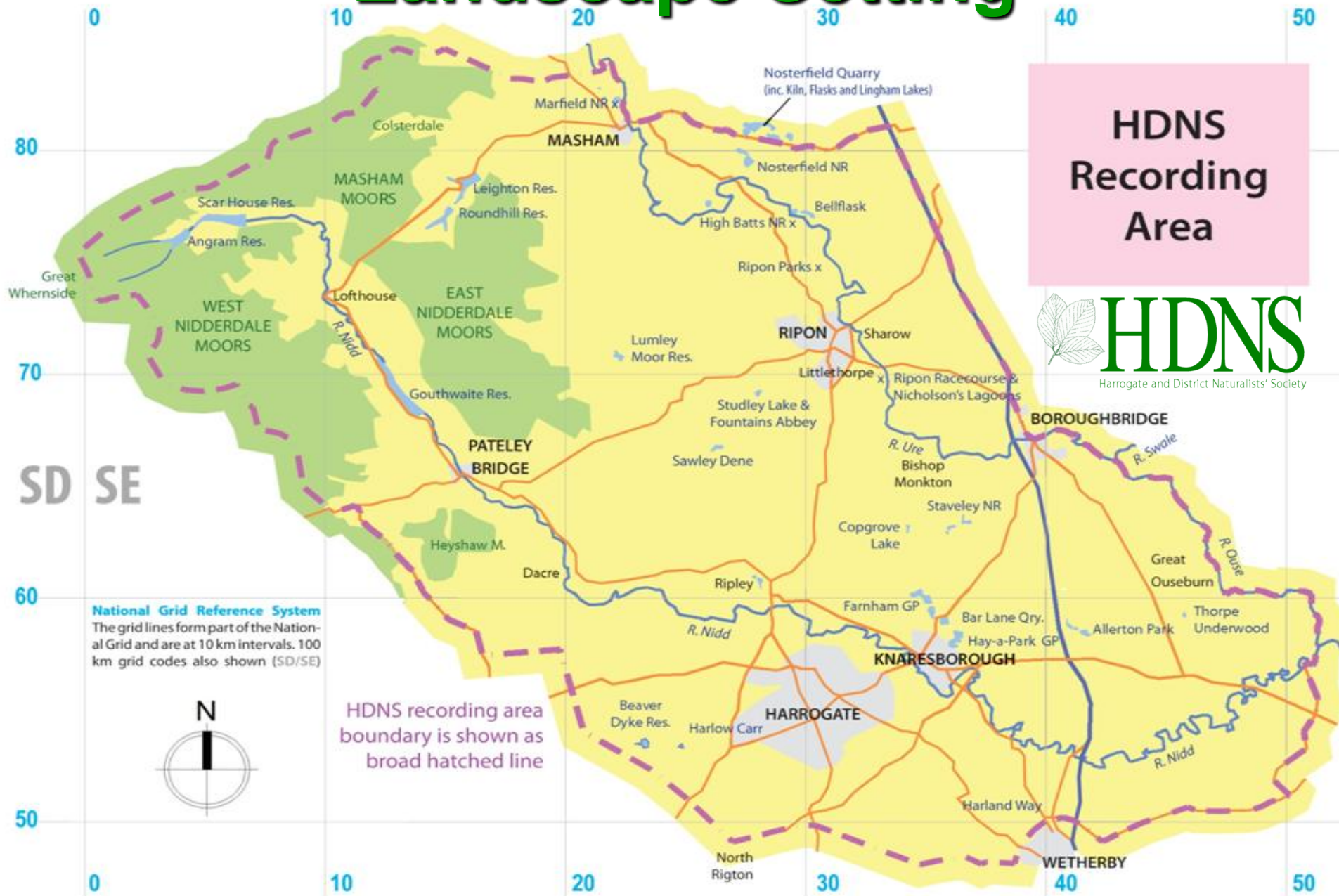


Simon Warwick
Lower Ure Conservation Trust



SWALE & URE
WASHLANDS PROJECT

Landscape Setting



Hackfall



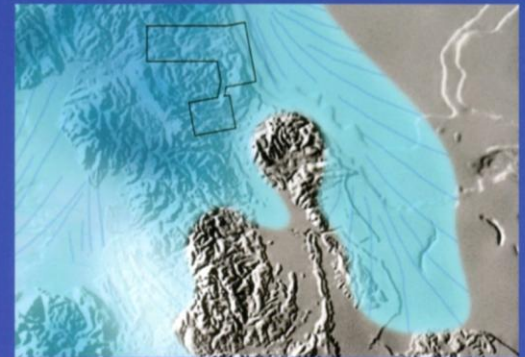
Proto-Ure
to c.10,500 BP
glacio-fluvial sand & gravel



Historic Landscape Change

THE QUATERNARY OF
NORTHUMBERLAND, DURHAM
AND NORTH YORKSHIRE
Field Guide

B.J. DAVIES, L. YORKE,
D.R. BRIDGLAND, & D.H. ROBERTS
Quaternary Research Association



QRA
Quaternary Research Association

2013



Historical Change

Yorkshire Naturalists' Union 1861 to present



INSPIRATION



Yorkshire Naturalists' Union Field Meeting at Ripon 1915



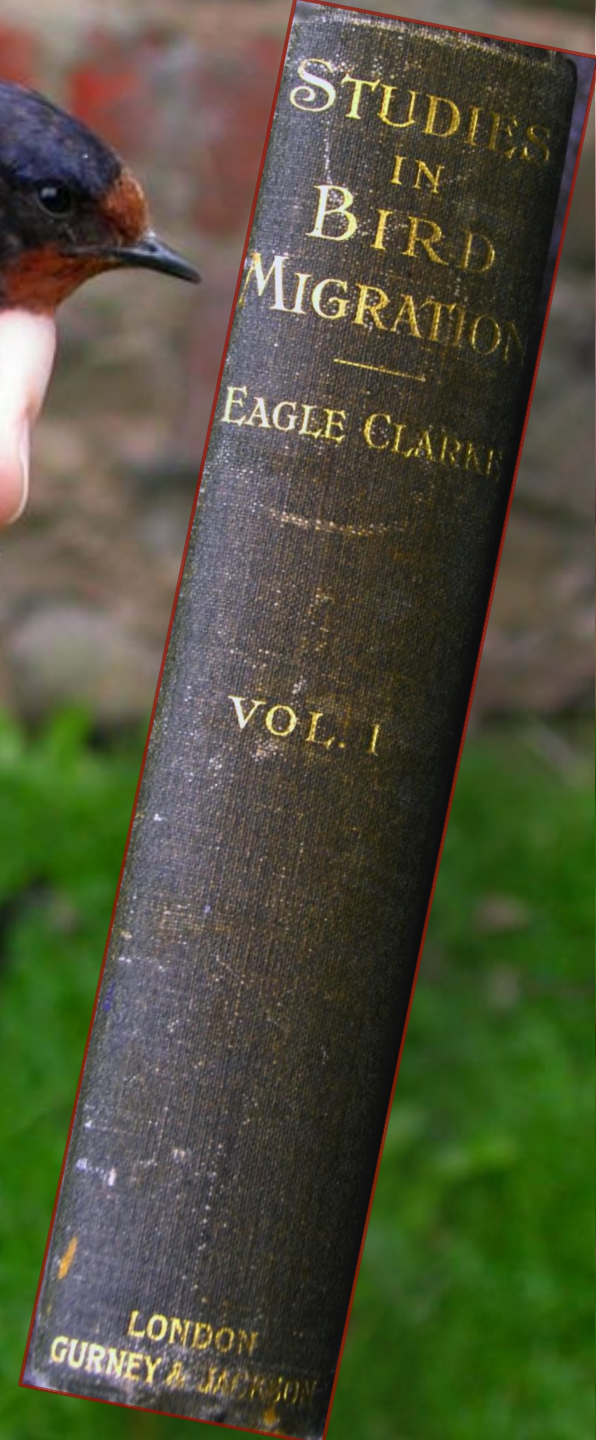
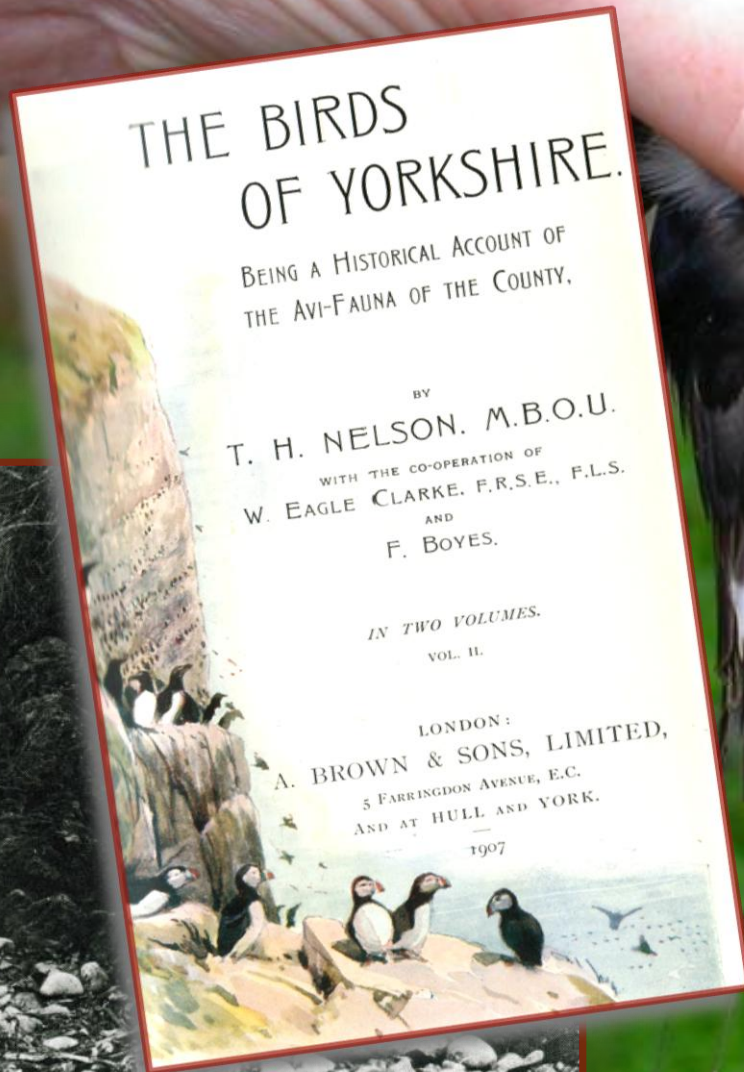
Riley Fortune, F.Z.S. of Harrogate

“May Fortune always smile on us”

William Eagle Clarke

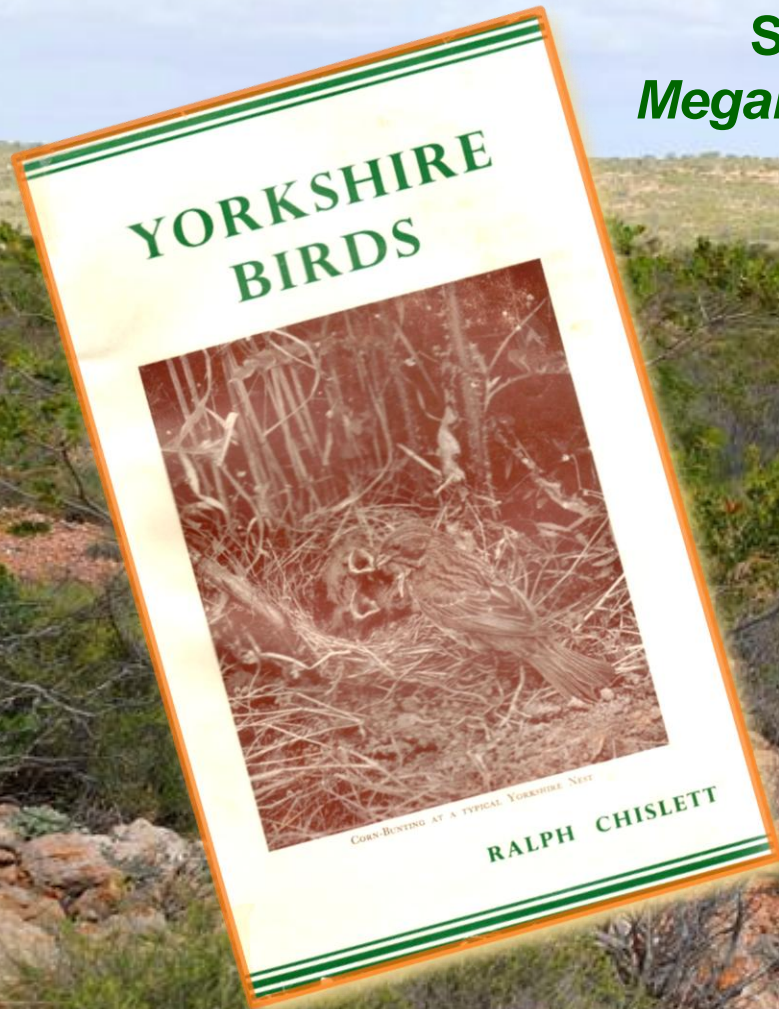
F.L.S., M.B.O.U.

of Leeds 1853-1938



Thomas Carter MBOU of Masham and Australia 1863 - 1931

Spinifex Bird
Megalurus carteri



Ralph Chislett MBOU, FRPS
1883 - 1964

Birds
in the
Harrogate
District



1961
186 species

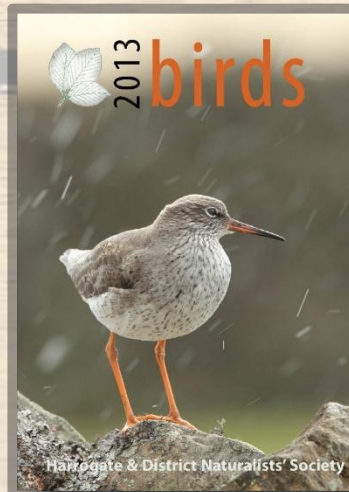
1977
227 species

2016
305 species



Alan F. G. Walker
of Harrogate
1928-1991

 **HDNS**
Harrogate and District Naturalists' Society



Rev. Henry Horrocks Slater 1851 - 1934



- C. divulsa*. Hackfall; Hutton Moor; Masham; Aldwark, n. (not to be confused with *C. elongata*).
C. stellulata. Masham; Aldwark, n. (not to be confused with *C. elongata*).
C. axillaris. Moor; Hutton Moor; Aldwark, n. (not to be confused with *C. elongata*).
C. elongata. Aldwark, n. (not to be confused with *C. elongata*).
C. curta. Wharfedale; Hutton Moor; Aldwark, n. (not to be confused with *C. elongata*).
C. ovalis. Oval-headed sedge. Bogs and pond sides. Whitmere, Hutton Moor; Leckby Carr; Sharow mires (in small quantity); in a marshy field below Blois Hall, Sharow; in a small pond near the North Bridge, Ripon (see under *Rhynchospora alba*).
C. stricta. Glaucous sedge. Bogs, rare. Flowers in April and May. Sharow mires; pond near North Bridge (see *C. ovalis*).
C. acuta. Slender-spiked sedge. Wet places. Sharow mires; ponds by the Ure, on the south side, above the North Bridge; "near Ripon and Copgrove" (Baines), which is slightly vague.
C. vulgaris. Tufted sedge. Marshes and wet meadows, common.
C. glauca. Glaucous heath sedge. Woods, pastures, and banks—wet or dry—common. Abundant on the railway banks near Hutton Conyers.
C. limosa. Mud sedge. Muddy bogs. Baines records it from Tanfield Hall Carr, and Leckby Carr, in neither of which places have I found it.
C. digitata. Finger sedge. Dry banks, on limestone preferred, in woods. Mackershaw; Hackfall.



1450. *C. pilulifera*. Round-spiked damp rocks. Hutton Moor; Plumpton rocks.

C. saxumbra (Lees). A sedge discovered at Plumpton rock the autumn of 1880, by Mr. Lees. I gather from a series of specimens that it is apparently with *C. pilulifera*. Mr. Lees. I am not sure it quite fulfils the requirements of a new species.

1452. *C. præcox*. Early sedge. Banks, common, flowers in May.

1454. *C. pallescens*. Pale sedge. Meadows. Marfield; field next Mackershaw.

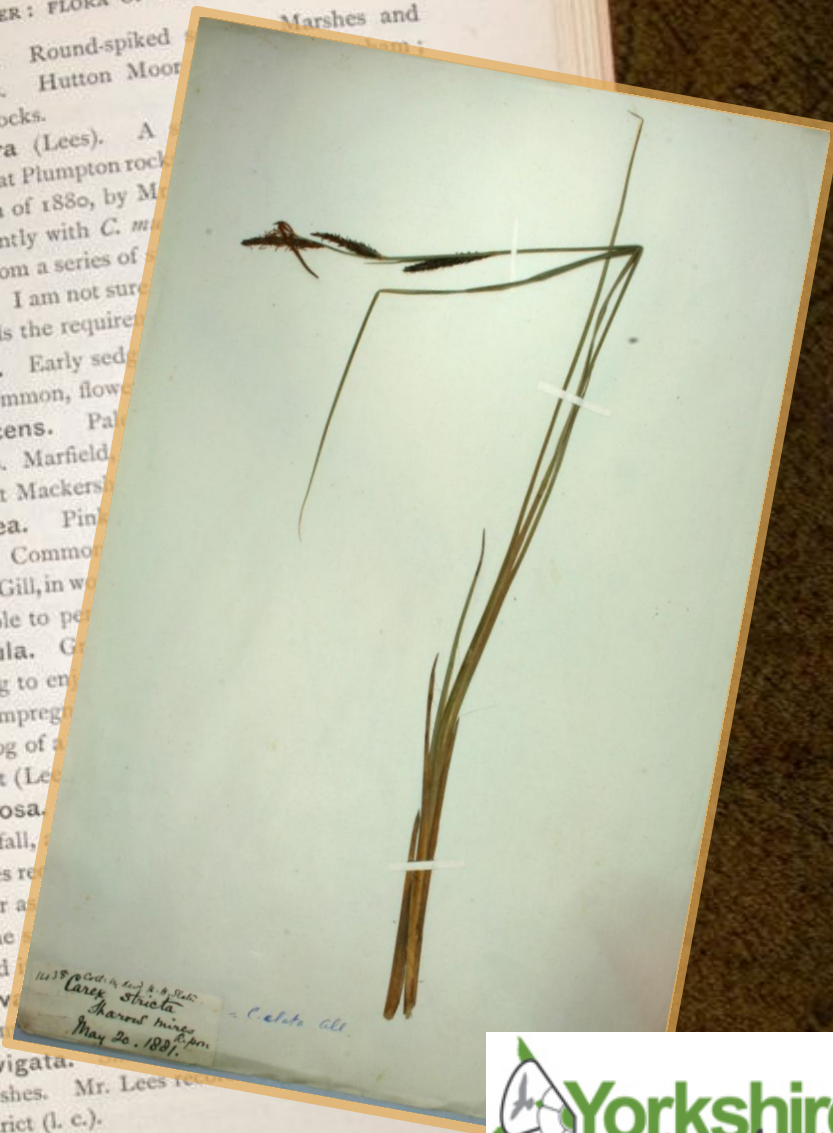
1455. *C. panicea*. Pink sedge. Woods. Common. Cayton Gill, in which I have been able to pick up a few specimens.

1459. *C. pendula*. Glaucous sedge. Seemingly to be a new species. Soil is impregnated with iron in a bog of a small district (Lees).

1460. *C. strigosa*. Hackfall, Baines records it. As far as I know, it is found only on the banks of the Ure.

1462. *C. sylvestris*. Common sedge. Marshes. Mr. Lees records it from May 20, 1881.

1463. *C. lævigata*. Marshes. Mr. Lees records it from a district (l. c.).





**Catherine “Kitty”
Muriel Rob F.L.S.
1906 - 1975**

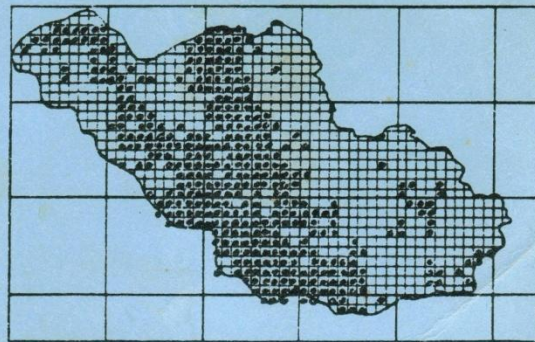


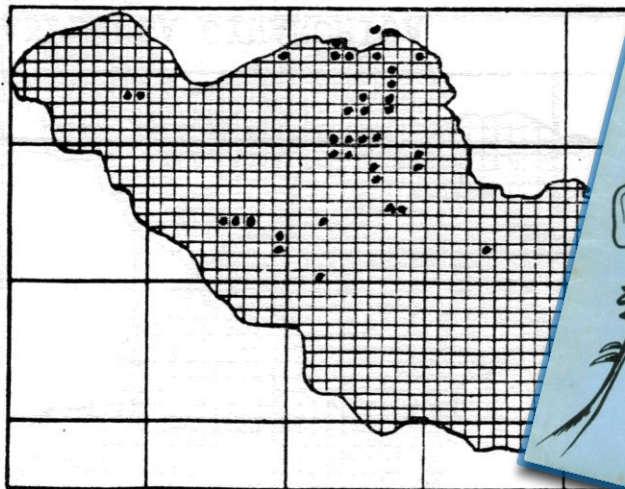
**Margaret Revell Sanderson
1924 - 1992**

**Beatrix “Mole” Molesworth
1917 – 2014**

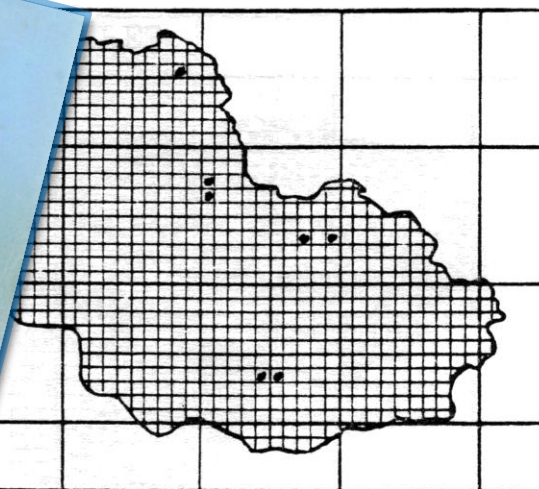
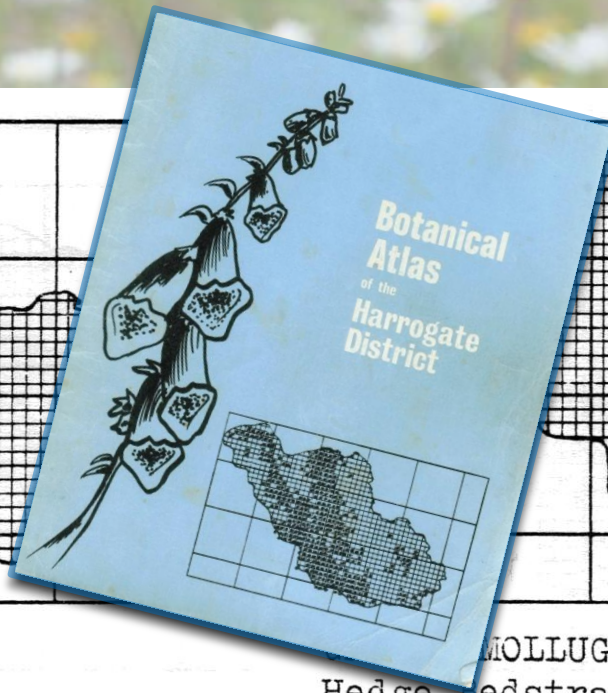
Compiled by
W H Jowsey
in 1978

**Botanical
Atlas**
of the
Harrogate District

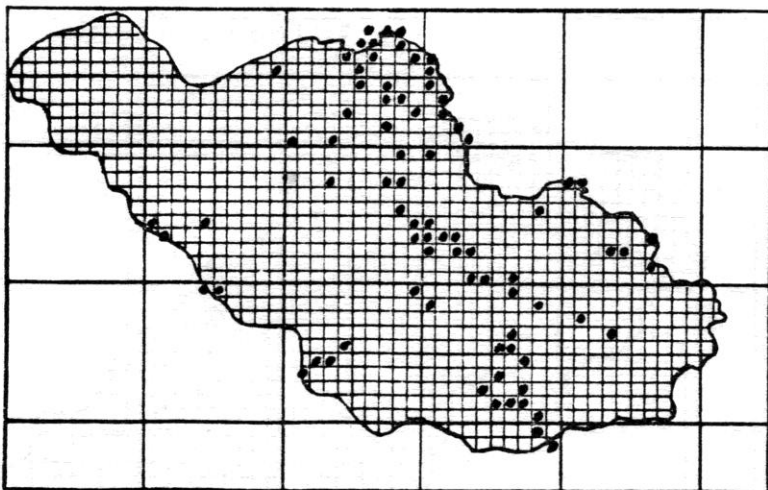




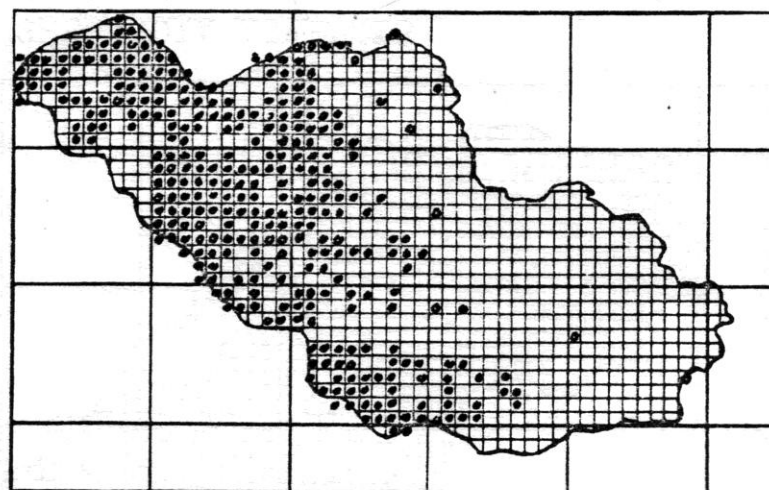
GALIUM ODORATUM
Woodruff



MOLLUGO
Hedge Bedstraw



GALIUM VERUM
Lady's Bedstraw



GALIUM SAXATILE
Heath Bedstraw

Grasping Opportunities





The LOWER URE
CONSERVATION
TRUST

Nosterfield Local Nature Reserve

‘A North Yorkshire Gem’





Nosterfield LNR – landscape setting



The LOWER URE
CONSERVATION
TRUST

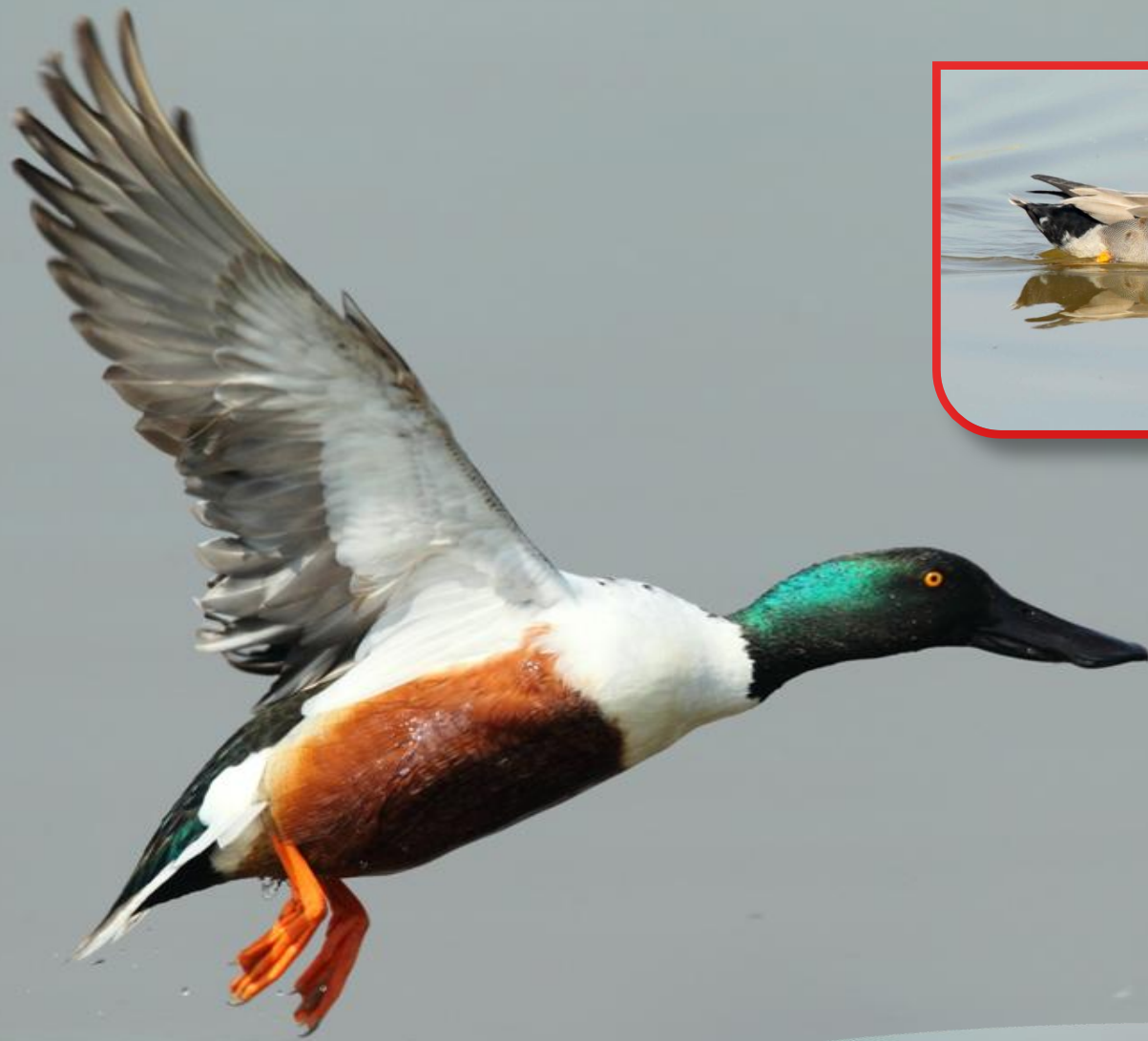
Nosterfield LNR

Clear Biodiversity Objectives





Wet Grassland – Fluctuating Water Levels



Wet Grassland – Fluctuating Water Levels



The LOWER URE
CONSERVATION
TRUST

Nosterfield LNR

Wet Winter! – January 2013

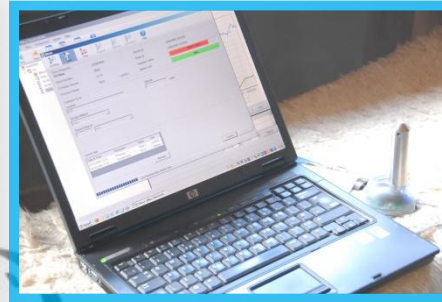
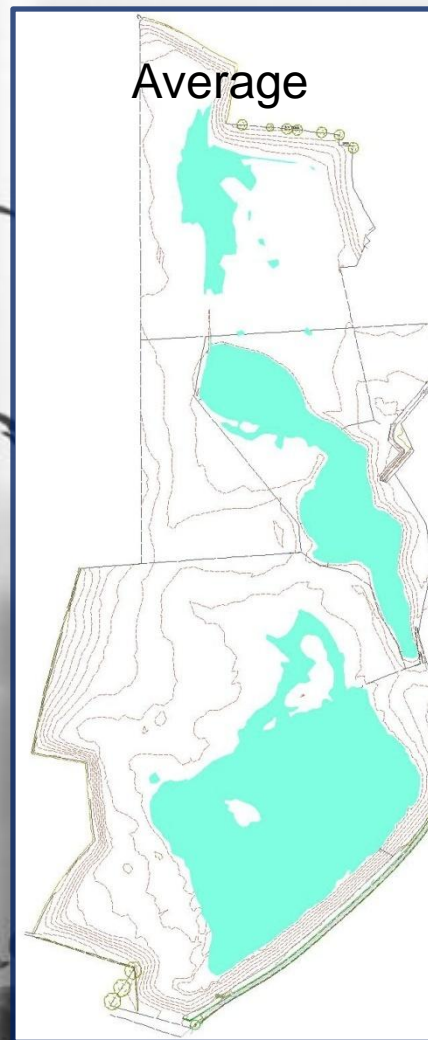




Hydrogeology - March 2014



Hydrogeology - June 2014



Hydrology – a natural resource?



HLS
2009

Landform tailored to water levels



The LOWER URE
CONSERVATION
TRUST



The LOWER URE
CONSERVATION
TRUST



HLS
2010

HLS
2010



Landform tailored to water levels



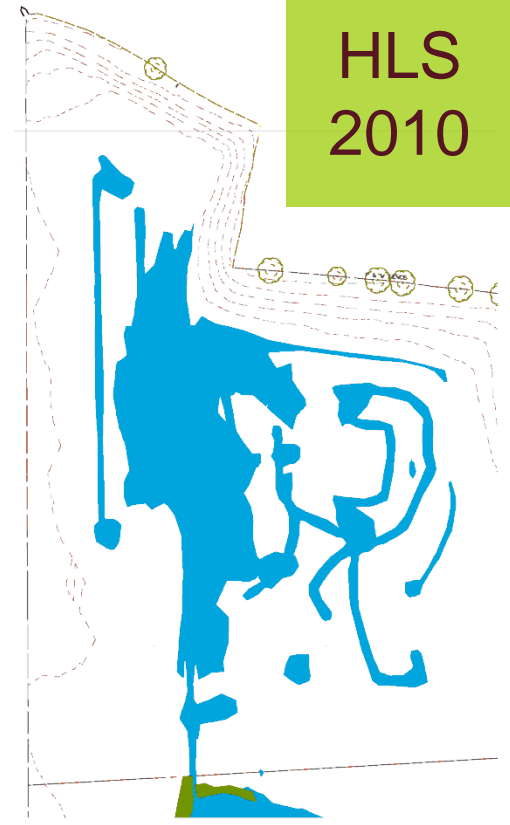
The LOWER URE
CONSERVATION
TRUST



Landform tailored to water levels



40.6 m AOD



41.2 m AOD

HLS
2010

Landform tailored to water levels



Is Nosterfield a 'turlough' ? !



Managing with agriculture

Higher Level Stewardship





GROWING IMPORTANCE



BIRDS

>150 species per annum



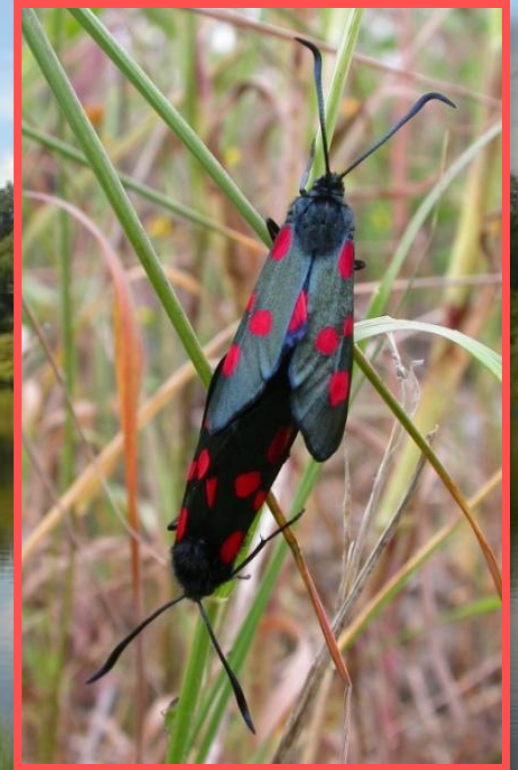
The LOWER URE
CONSERVATION
TRUST

Waders



BIRDS - 230 full species recorded





Species-rich Habitats

Natural Regeneration



Natural Processes at Nosterfield



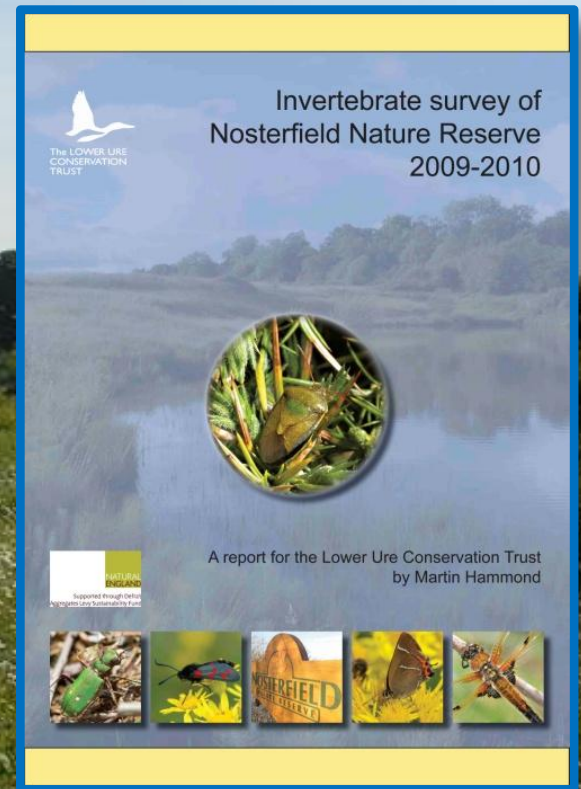
>330 plant species recorded

well over 1,500 Invertebrates





People





Species-monitoring



The LOWER URE
CONSERVATION
TRUST



The LOWER URE
CONSERVATION
TRUST

Nosterfield in the community



Nosterfield in the community





- **Create habitat - wildlife arrives**



The LOWER URE
CONSERVATION
TRUST

Wetland (Re)-creation



Habitat (Re)-creation



‘Nosterfield . . . re-beautified by nature in a wild garden . . . the spot is a perfect arcady’

Edmund Bogg

The Abbey Vale of Lower Ure.

Circa. 1905-1910.



‘ . . . on summer evenings the glow-worms are wont to hang out their fieldstar lamps, illuminating almost super naturally hedge-row and bank, as if lit by the hands of fairy folk.’

Edmund Bogg

The Abbey Vale of Lower Ure.

Circa. 1905-1910.



Create habitat - wildlife arrives

Decisions based on Evidence

**Habitat loss in the Swale and Ure
Washlands since 1700, with an analysis of
extinctions from the local flora**



Herbarium specimens of Rannoch Rush (*Scheuchzeria palustris*), first recorded in Britain from raised mire at Leckby Carr near Boroughbridge

A report for North Yorkshire County Council and Natural England as part of the Swale and Ure Washlands Project

Martin Hammond, Wildlife Consultant, 110 Kingsway West, Acomb,





SWALE & URE
WASHLANDS PROJECT

An artistic illustration of a wetland landscape. In the foreground, there are tall reeds, pink flowers, and a dragonfly. A small pond with lily pads is visible. In the middle ground, there are fields, a small village with a church, and a large hill in the background. Several birds are flying in the sky, and a small bird is perched on a reed in the upper right corner.

EBS 2020

200,000 ha of NEW BAP Priority Habitat



The LOWER URE
CONSERVATION
TRUST

Photographs:

Whitfield Benson

APS (UK)-aerial photographs

Jill and Simon Warwick Yorkshire

Naturalists' Union archives

Website: - **www.luct.org.uk**

Twitter: - **@NosterfieldLNR**

